



Palm Beach Palm & Cycad Society

Affiliate of the International Palm Society

Monthly Update

January 2010

FEATURED THIS MONTH: *Dypsis pembana*



Dypsis pembana



Dypsis cabadae



Dypsis cabadae



Dypsis lanceolata

FRONT COVER: *Dypsis pembana* growing in the Beck garden.

Palm Beach Palm & Cycad Society Officers

Betty Ahlborn, President (561) 722-8106
Tom Ramiccio, First Vice President, Sales (561) 582-5915
Marshall Dewey, Second Vice President, Planting
Dale Holton, Third Vice President, Programs (561) 965-6792
Ruth Sallenbach, Secretary (561) 965-5430
Ingrid Dewey, Treasurer
Elise Moloney, Membership Chairman
Brenda Beck, Editor & Historian (561) 963-5511
Appointees
Charles Beck, Librarian
Marty Dougherty, Web Master
Ruth Lynch, Refreshment Chairman (561) 312-5046
Kitty Philips & Susan Cioci, Activities & Events Coordinators

VISIT US AT palmbeachpalmcycadsociety.com

INSIDE THIS ISSUE:

- 4 From the Editor
- 5 Featured this Month: *Dypsis pembana*
- 7 The Coconut: Home of the Wild
- 8 Upcoming Meetings
- 9 *Dictyosperma album rubrum* Contest on January 6, 2010
- 10 Membership Application & Renewal
- 11 Member's Outstanding Photos

Opinions expressed and products or recommendations published in this newsletter may not be the opinions or recommendations of the Palm Beach Palm & Cycad Society or its board of directors.

For permission to reproduce any article that appears in this publication, contact the Palm Beach Palm & Cycad Society editor at beck4212@aol.com



Phone
(561) 722-8106
(561)798-4562
BETTY AHLBORN

13823 Paddlefoot Lane
Loxahatchee, FL 33470

Exotic Palms
&
Tropicals

FROM THE EDITOR


Our new year will begin with a revised slate of Palm Society officers. I hope you will join the board in welcoming Elise Moloney as the new Membership Chair and welcome Susan Cioci who will work as an additional Activities and Events Coordinator.

I hope you will also express your appreciation to Dennis McKee for filling the slot of Membership Chair for 2009.

The Palm Society Board also wishes to thank all those members who volunteer their time, donate plants, and bring food to sustain us at our meetings throughout the year. Without member assistance, the Society could not function.

Brenda Beck, Editor

(561) 586-2332



LAKE OSBORNE ANIMAL CLINIC

JOHN T. LYNCH, D.V.M.

1502 Lake Osborne Dr.
Lake Worth, FL 33461

FEATURED THIS MONTH: *Dypsis pembana*

by Charlie Beck

When Scott Zona presented a list of his 20 favorite palms, he included *Dypsis cabadae* and *Dypsis lanceolata*. Both of these are attractive clumping palms with ringed green trunks, but I think both are trumped by the recently available *Dypsis pembana*.

D. pembana is a more robust palm, growing in our garden two to three times as fast as *D. cabadae* or *D. lanceolata*. The stems are larger and are waxy green with an attractive silver cast. *D. pembana* is a sparse clumper. Planted four years ago from a three gallon pot, our specimen has a 20 foot tall overall height with a six and one-half foot tall stem. It only has one sucker. The leaflets are wider than *D. cabadae* and the leaves grow in three ranks similar to the Triangle Palm.

In comparison, we have several 16 year-old *D. cabadae* which

have an overall trunk height of 18 feet and have grown many suckers. Our four year-old *D. lanceolata* has an overall height of eight and one-half feet with a few suckers.

D. pembana is endemic to Pemba Island which is located just off mainland Africa. It grows in low elevation moist forests. This palm has a vulnerable conservation status with only 3,000 specimens in the wild within a single forest.

Even though *D. pembana* is reported to be cold sensitive, I have noticed no effects of our winter cold temperatures on this palm. *D. pembana* is reported to grow 40 feet tall so it might be wise to plant a succession of these palms so that there are always beautiful crowns to admire close to the ground.

GROWING CONDITIONS IN OUR GARDEN FOR <i>Dypsis pembana</i>	
Location	4 miles from ocean in suburban Lantana
Soil	Sand over a layer of hardpan (pineland flatwood habitat)
Irrigation	¾ inch applied twice a week
Flooding	Periodic inundation in sandy soil acceptable
Fertilization	3 times a year with Palm special analysis
Light	Light shade
Micronutrient Deficiencies	None observed
Insect Damage	None observed
Hurricane Resistance	Unknown



Home surrounded by established, rare palms.

112 Gregory Place
West Palm Beach

- 2 miles south of Southern
- 2 Bedrooms
- 1 bath
- Large Florida Room
- New Roof
- Shade House
- Privacy Fence & Dog Kennels
- Lot size is 75"x 95"
- List price \$249,000.
- Desirable location, great income as rental!

Contact Elise Moloney
at 561-312-4100.



Some of the in-ground palms I have:

- Archontophoenix myolensis
- Areca catechu
- Bentinckia nicobarica
- Butia capitata
- Carpoxyon macrospermum
- Chamaedorea ernesti-augustii
- Chambeyronia macrocarpa
- Coccothrinax barbadensis
- Coccothrinax crinita
- Copernicia ekmanii
- Cyrtostachys renda
- Dictyosperma album (red)
- Dypsis cabadae
- Dypsis lastelliana
- Gaussia maya
- Howea forsteriana

- Hyophorbe indica
- Hyophorbe lagenicaulis
- Latania lontaroides
- Pritchardia pacifica
- Pseudophoenix sargentii
- Satakentia liukiensis
- Sophokentia begunii
- Encephalartos ferox

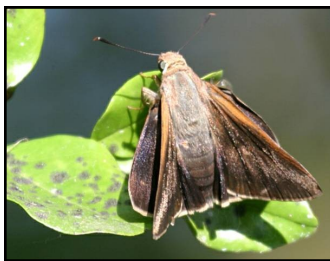


THE COCONUT: HOME OF THE WILD

by Charlie Beck

I knew that our native palms were great wildlife habitat plants. They provide food, cover, and places to raise young for many of our native fauna.

Because of our spa placement, I have had many hours observing activity around our coconut palms. I was surprised to observe that so many insects and animals use the non-native coconut (*Cocos nucifera*) as well. Our native bees are attracted to the flowers which provide nectar and pollen. Especially on cold mornings, I have noticed that hummingbirds seem to prefer coconut



Monk Skipper Butterfly

flowers as a nectar source. Raccoons give birth to their young and nurture them up in coconuts for 8 to 12 weeks before the family finally climbs down the trunk. The Monk skipper, a dark brown butterfly, uses coconut leaves as a larval food plant.

So, if you ever apply for a garden certification from the National Wildlife Federation (Backyard Wildlife Habitat) or North American Butterfly Association (Certified Butterfly Garden), take credit for your coconut palm as a wildlife habitat plant.

PLACE YOUR

Business Card Ad, FOR SALE Ad or Discount Coupon

\$6 PER MONTH OR \$66 PER YEAR (approximately 3" X 1 3/4" space)

HALF PAGE—\$20 A MONTH

FULL PAGE—\$35 A MONTH

E-mail your ad or any photograph or information you would like included to beck4212@aol.com.

Send your check to:

Palm Beach Palm
& Cycad Society
c/o Brenda Beck
P.O. Box 21-2228

Royal Palm Beach, FL 33421

(Check must be received prior to print.)

*Please share your garden experiences.
Submit your stories and photos to beck4212@aol.com*

UPCOMING MEETINGS

GENERAL MEETING

Date: Wednesday, January 6, 2010
Time: 7:30 p.m.
Location: Mounts Botanical Garden
Subject: Montgomery Botanical Center Palm & Cycad Collection
Speaker: Dr. M. Patrick Griffith, Executive Director
Montgomery Botanical Center

EXECUTIVE BOARD MEETING

Date: Wednesday, January 27, 2010
Time: 7:00 p.m.
Location: Ruth Sallenbach's Home
6285 S. Military Trail, Lake Worth
(561) 965-5430

HOLTON NURSERY

PALMS and CYCADS

5221 3rd Road
Lake Worth, FL 33467
Phone (561) 965-6792
Email cycadnut@gate.net



"By appointment only"

**CONTEST WINNER
TO BE ANNOUNCED ON JANUARY 6, 2010**

**DON'T FORGET TO BRING YOUR
DICTYOSPERMA ALBUM RUBRUM ON JANUARY 6.**

**WILL YOU BECOME THE NEXT MASTER GROWER
AND WIN A
CARPOXYLON MACROSPERMUM?**

SORRY - COMMERCIAL GROWERS ARE NOT ELIGIBLE.



Village Marina

464-4391

Wes Taylor



Mike Harris
1584 F Road
Loxahatchee, FL 33470

Phone: (561) 792-0333
E-mail: palmz@gate.net

PLEASE RENEW YOUR MEMBERSHIP TODAY



Palm Beach Palm & Cycad Society

Affiliate of the International Palm Society

**MEMBERSHIP APPLICATION AND RENEWAL
(PLEASE PRINT CLEARLY)**

Name: _____
Address: _____
Home Telephone: _____
Cell Phone: _____
E-mail address: _____

New Member Renewal

Please send the annual membership fee of \$20 (includes two adults living in the same household) payable to the Palm Beach Palm & Cycad Society, to:

Palm Beach Palm & Cycad Society
P.O. Box 21-2228
Royal Palm Beach, FL 33421
Attn: Membership Chairman

Membership runs from January 1 through December 31. Membership includes the Monthly Update, a chance to win a free prize every month at our monthly meeting, and receipt of free palms and cycads at the annual plant give-away in December.

FOR PALM SOCIETY USE ONLY			
\$	Check No.	Y	

(Membership fees will increase effective February 1, 2010.)

MEMBER'S OUTSTANDING PHOTOS

by Dale Holton



Dioon holmgrenii



Zamia purpurea



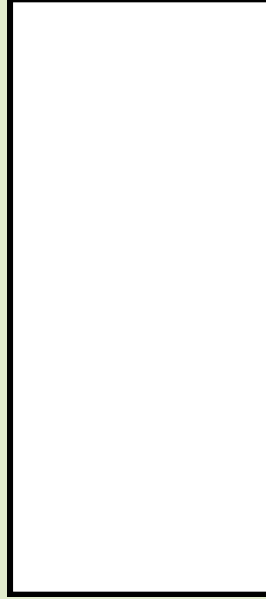
Dioon spinulosum



Palm Beach Palm & Cycad Society
 P.O. Box 21-2228
 Royal Palm Beach, FL 33421



Hyophorbe indica—newly emerged inflorescence and colorful display of trunk after loss of leaf base.



HAPPY NEW YEAR

January 2010 Monthly Update